

IMPORTANT INFORMATION

Venue Track - Installation Guide

TD1682/TD1683/TD1684/TD1685
TT1682/TT1683/TT1684/TT1685



Disconnect electricity supply before installation

To be installed by qualified personnel only, in accordance with current building and wiring regulations.

When installing, we recommend wearing disposable gloves to avoid fingerprinting to the paint work of the luminaire.

Read leaflet fully before installation.

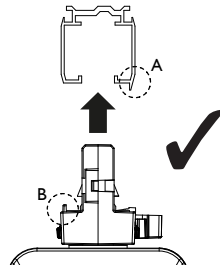


THE SILVERLINK, WALLSEND, NEWCASTLE UPON TYNE,
TYNE & WEAR, NE28 9ND

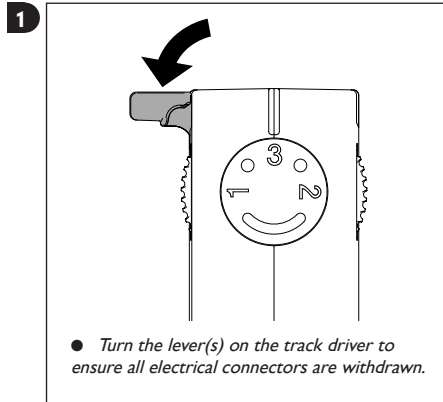
Technical: (0191) 280 9914
Email: technical@hacel.co.uk
Web: www.hacel.co.uk

Installation - Track

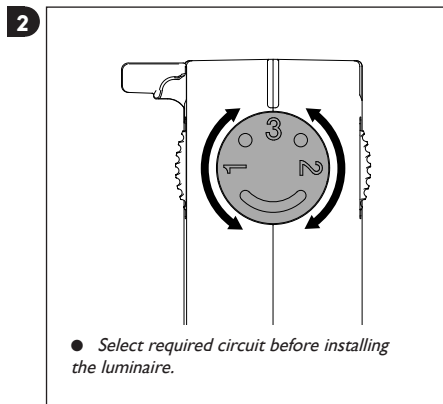
Note



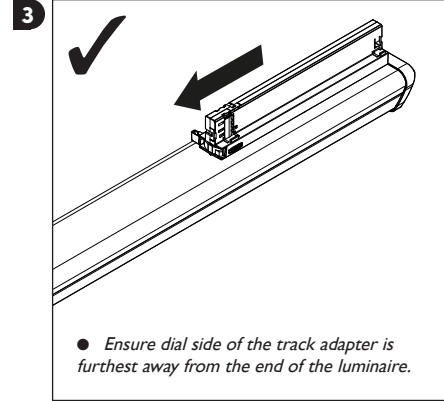
- The track adapter will only fit into the track in one orientation to ensure correct polarity.
- Do not force the track adapter into the track, if it proves difficult to insert, try the other orientation



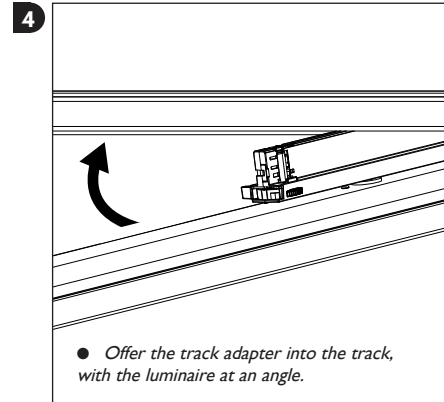
- Turn the lever(s) on the track driver to ensure all electrical connectors are withdrawn.



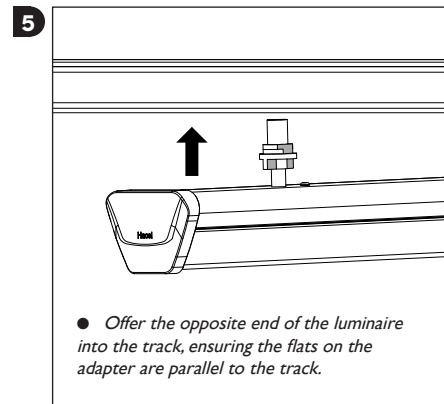
- Select required circuit before installing the luminaire.



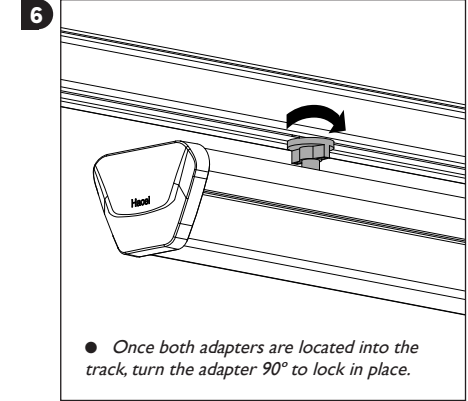
- Ensure dial side of the track adapter is furthest away from the end of the luminaire.



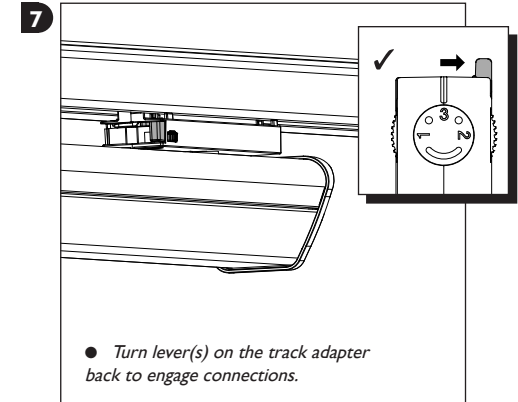
- Offer the track adapter into the track, with the luminaire at an angle.



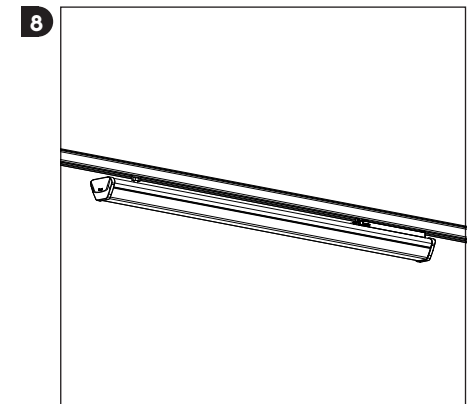
- Offer the opposite end of the luminaire into the track, ensuring the flats on the adapter are parallel to the track.



- Once both adapters are located into the track, turn the adapter 90° to lock in place.



- Turn lever(s) on the track adapter back to engage connections.



Option 640 - Tamper - Proof Bracket

