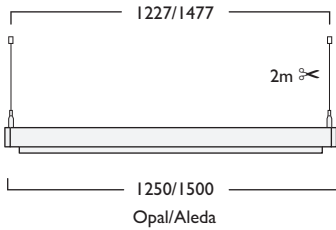


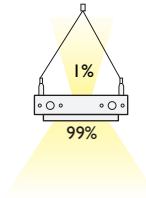
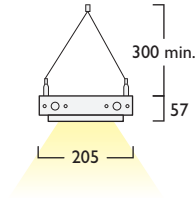
# Link

## Suspended & Surface

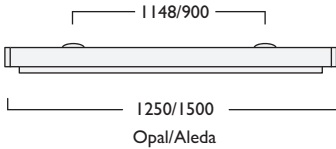
- Exciting and imaginative surface or suspended horizontal system
- Allows a diverse range of lighting scenarios to be created
- Neatly integrates general, accent and ambient lighting
- Engineering excellence with contemporary styling
- Branded components ensure maximum level of performance and reliability
- Suspended Modules are supplied with 2x 2m Twin Wire Suspensions
- Wireless Lighting Control available, see Connected video for full overview



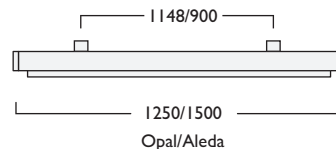
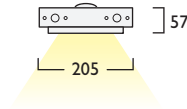
**Link Suspended**



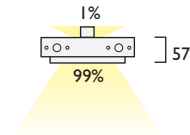
**+ Light Spill**



**Link Surface**



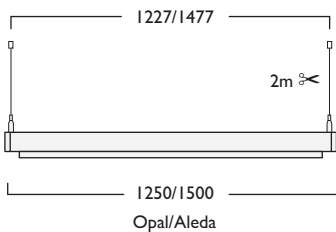
**Link Surface + Light Spill**



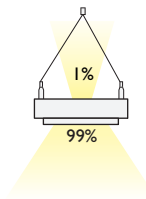
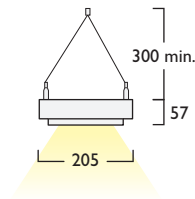
# Solo

## Suspended & Surface

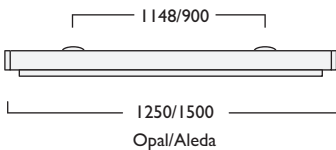
- Designed to complement Link Modules
- Slim, sleek design enhanced by choice of surface and suspended options
- Choice of light sources available
- Encompasses design, performance and quality engineering
- Available in a choice of powder coated finishes including corporate colours to order
- Suspended Modules are supplied with 2x 2m Twin Wire Suspensions
- Wireless Lighting Control available, see Connected video for full overview



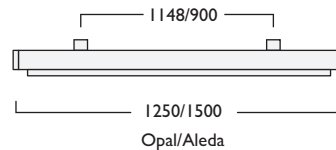
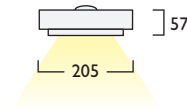
**Solo Suspended**



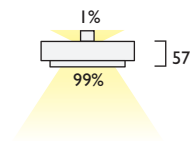
**+ Light Spill**



**Solo Surface**



**Solo Surface + Light Spill**





3	Warm White LED (3000K)	CRI 80				CRI 90			
		12W	17W	22W	28W	12W	17W	22W	28W
	Lumen Output	2041 lm	2885 lm	4099 lm	5206 lm	1650 lm	2330 lm	3297 lm	4206 lm
	LOR	0.81	0.81	0.81	0.81	0.81	0.81	0.81	0.81
	CRI	80	80	80	80	90	90	90	90
	Total Power	11.9W	17.1W	24.4W	31.2W	11.9W	17.1W	24.4W	31.2W
	Power Factor	0.94	0.96	0.96	0.97	0.94	0.96	0.96	0.97
	Running Current	0.06A	0.08A	0.11A	0.14A	0.06A	0.08A	0.11A	0.14A
	Inrush Current (Std)	3.5A (35us)	18A (210us)	24A (200us)	30A (200us)	3.5A (35us)	18A (210us)	24A (200us)	30A (200us)
	Inrush Current (Dim)	10A (80us)	10A (50us)	3.31A (43us)	5.33A (42us)	10A (80us)	10A (50us)	3.31A (43us)	5.33A (42us)
	Efficacy	138 lm/W	136 lm/W	136 lm/W	135 lm/W	112 lm/W	110 lm/W	109 lm/W	109 lm/W
	Emergency Output (BLF)	361 (17%)	369 (12%)	359 (8%)	373 (7%)	306 (17%)	313 (12%)	304 (8%)	315 (7%)

4	Neutral White LED (4000K)	CRI 80				CRI 90			
		12W	17W	22W	28W	12W	17W	22W	28W
	Lumen Output	2143 lm	3023 lm	4294 lm	5445 lm	1796 lm	2533 lm	3620 lm	4592 lm
	LOR	0.81	0.81	0.81	0.81	0.81	0.81	0.81	0.81
	CRI	80	80	80	80	90	90	90	90
	Total Power	11.9W	17.1W	24.4W	31.2W	11.9W	17.1W	24.4W	31.2W
	Power Factor	0.94	0.96	0.96	0.97	0.94	0.96	0.96	0.97
	Running Current	0.06A	0.08A	0.11A	0.14A	0.06A	0.08A	0.11A	0.14A
	Inrush Current (Std)	3.5A (35us)	18A (210us)	24A (200us)	30A (200us)	3.5A (35us)	18A (210us)	24A (200us)	30A (200us)
	Inrush Current (Dim)	10A (80us)	10A (50us)	3.31A (43us)	5.33A (42us)	10A (80us)	10A (50us)	3.31A (43us)	5.33A (42us)
	Efficacy	145 lm/W	143 lm/W	142 lm/W	141 lm/W	122 lm/W	119 lm/W	120 lm/W	119 lm/W
	Emergency Output (BLF)	376 (17%)	385 (12%)	375 (8%)	388 (7%)	321 (17%)	328 (12%)	319 (9%)	332 (7%)

Table applies to one LED Light Engine

## Linear Light4 Aleda®

### Link & Solo Modules

LED CRI 80										LED CRI 90									
2x 12W	LED	1500mm	046	LED	12	+	377	2x 12W	LED	1500mm	047	LED	12	+	378				
2x 17W	LED	1500mm	046	LED	17	+	377	2x 17W	LED	1500mm	047	LED	17	+	378				
2x 22W	LED	1500mm	046	LED	22	+	377	2x 22W	LED	1500mm	047	LED	22	+	378				
2x 28W	LED	1500mm	046	LED	28	+	377	2x 28W	LED	1500mm	047	LED	28	+	378				
3x 12W	LED	1500mm	048	LED	12	+	377	3x 12W	LED	1500mm	049	LED	12	+	378				
3x 17W	LED	1500mm	048	LED	17	+	377	3x 17W	LED	1500mm	049	LED	17	+	378				
3x 22W	LED	1500mm	048	LED	22	+	377	3x 22W	LED	1500mm	049	LED	22	+	378				
3x 28W	LED	1500mm	048	LED	28	+	377	3x 28W	LED	1500mm	049	LED	28	+	378				

230V 50Hz IP 20 1477mm 11.0 kg

LA Link Suspended LD Solo Suspended

A Integral Driver/Remote  
 J Switch Dim  
 S DALI Dim  
 L DALI Bluetooth

3 Warm (3000K) 4 Neutral (4000K)

1 White (RAL 9010) 2 Urban Graphite (RAL 7046) 3 Black (RAL 9005)

Reflector	CRI 80	CRI 90
480 2x Narrow Beam	379	380
481 2x Wide Beam	381	382
482 3x Narrow Beam	379	380
483 3x Wide Beam	381	382

144 2x 5m Twin suspensions (wires only)

Luminescent Halo, Baffle Options Shown

Tel: (0191) 280 9911 Email: technical@hacel.co.uk Web: www.hacel.co.uk

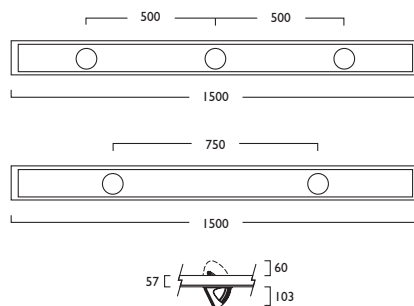
V3 - 07/2024

\* All values provided in this document are subject to International standards and electronic components from leading suppliers which are subject to +/- 10% tolerance and apply at an ambient temperature of 25°C. Hacel Lighting look to constantly improve its product and reserve the right to change specifications without prior notification.



## Linear Light4 Aleda®

- Stylish Aleda® LED in Duet or Trio format neatly integrated into LL4 Module
- Available in a choice of lumen outputs, delivering up to 5445 lumens
- Efficacies up to 145 lm/W
- Single point Zhaga Book 3 LED
- Life expectancy in excess of 57,000 hours (L90 B10)
- Luminaires feature smooth and precise pan and tilt adjustment
- Link and Solo Modules available
- 2x 2m twin Suspension Wires and Chrome Clutches for ease of adjustment
- Wireless Lighting Control available, see Connected video for full overview
- Digital Dim and Digital Dim + Emergency options available on request

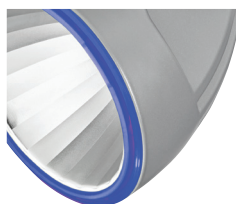


### Options

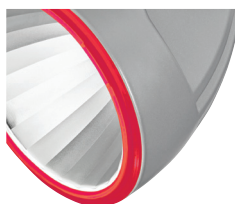
#### ■ Luminescent Halo, Baffle Options



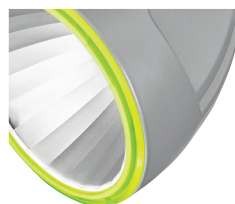
486 2x / 491 3x  
Etched Ice



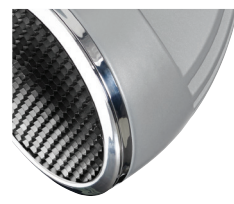
487 2x / 492 3x  
Neptune Blue



488 2x / 493 3x  
Mars Red

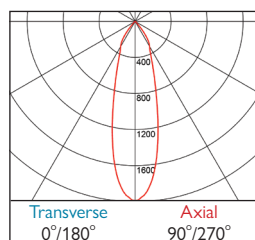


489 2x / 494 3x  
Acid Green

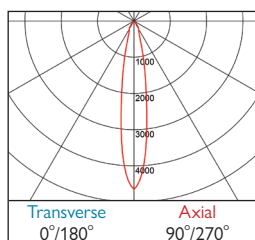


490 2x / 495 3x  
Anti Glare Baffle

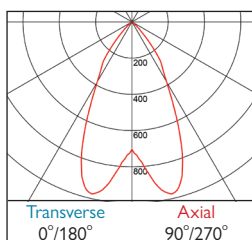
### Photometrics



377-378 DLOR: 0.81



379-380 DLOR: 0.83



381-382 DLOR: 0.86