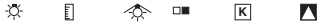
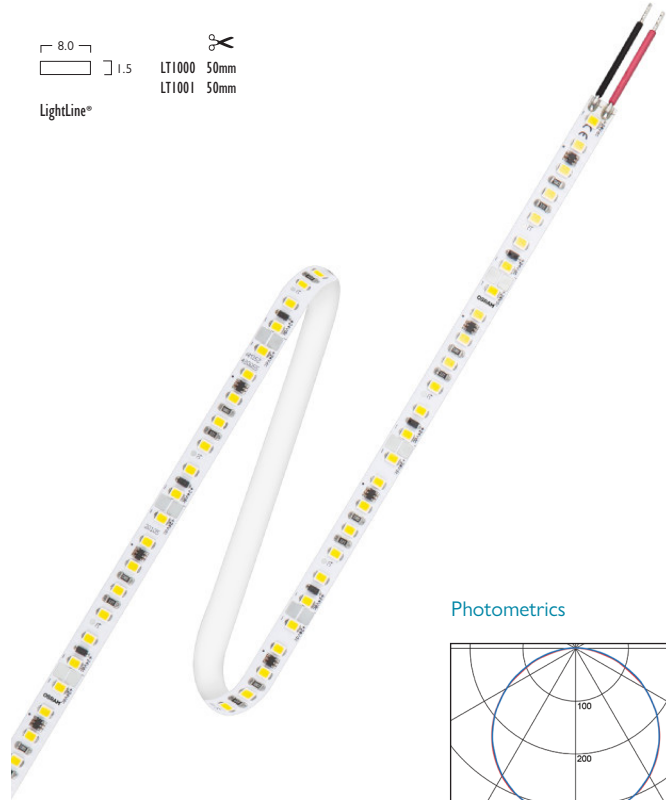


LightLine®



LED

28W	LED	5000mm	LT1000	P	LED	28	443
66W	LED	5000mm	LT1001	P	LED	66	444



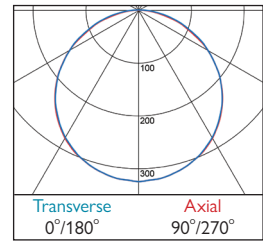
PRODUCT INFORMATION

3	Warm White LED (3000K)	CRI 80	28W	66W
	Lumen Output		3300 lm	8300 lm
	LOR		1.00	1.00
	CRI		80	80
	Total Power		31.4W*	72.6W*
	Power Factor		0.95*	0.97*
	Running Current		0.14A*	0.33A*
	Inrush Current (Std)		30.0A*	41.0A*
	Inrush Current (Dim)		43.0A*	48.0A*
	Efficacy		105 lm/W*	114 lm/W*
	Emergency Output (BLF)		N/A	N/A

4	Neutral White LED (4000K)	CRI 80	28W	66W
	Lumen Output		3350 lm	8350 lm
	LOR		1.00	1.00
	CRI		80	80
	Total Power		31.4W*	72.6W*
	Power Factor		0.95*	0.97*
	Running Current		0.14A*	0.33A*
	Inrush Current (Std)		30.0A*	41.0A*
	Inrush Current (Dim)		43.0A*	48.0A*
	Efficacy		106 lm/W*	115 lm/W*
	Emergency Output (BLF)		N/A	N/A

* Typical values may vary depending on Driver used

Photometrics



443/444 DLOR: 1.00

LightLine® Connectors



Starter Connector	500mm	LT1002	P	CON 005
Connector	N/a	LT1003	P	CON 005

LightLine® Drivers

24V DC Constant Voltage

Non Dimming		L x W x H			
30W	IP20	270 x 30 x 18mm	CP1266	A	EPP 030
40W	IP66	208 x 43 x 26mm	CP1192	A	EPP 040
75W	IP20	220 x 47 x 44mm	CP1267	A	EPP 075
100W	IP66	240 x 50 x 34mm	CP1198	A	EPP 100
160W	IP20	404 x 30 x 22mm	CP1268	A	EPP 160
250W	IP20	343 x 60 x 31mm	CP1269	A	EPP 250

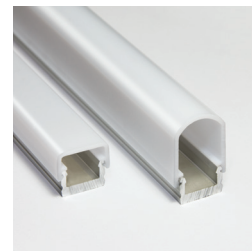
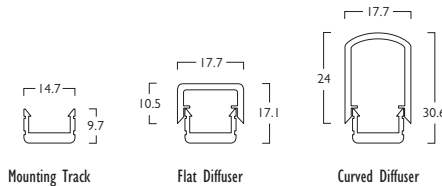
DALI/Switch Dimming		L x W x H			
50W	IP20	346 x 32 x 22mm	CP1270	A	EPP 050
80W	IP20	346 x 32 x 22mm	CP1063	A	EPP 080
100W	IP66	227 x 69 x 37mm	CP1271	A	EPP 100

Bluetooth		L x W x H			
80W	IP20	346 x 32 x 22mm	CP1285	A	EPP 080

- Flexible IP00 LED Modules and Connectors
- Available in a choice of lumen outputs, delivering up to 1670 lumens per metre
- Efficacies up to 115 lm/W, colour stability within 3 MacAdams
- Life expectancy in excess of 50,000 hours (L70 B50)
- Single colour and RGB available on request
- In ambient temperatures above 40C, Hacer recommend using Mounting Track
- LED Modules should be matched to Driver capabilities/limitations when specifying
- Mounting Track can be used as a heatsink
- Mounting Track is pre-drilled or can be fitted with Fixing Brackets
- Flat Diffuser has a transmission of 50%, Curved Diffuser has a transmission of 59%

LightLine® Accessories

Mounting Track	2000mm	LT1010	X	TRK 000	
Flat Diffuser	2000mm	LT1020	X	DFR 000	
Flat Diffuser End Cap	N/A	LT1599	X	CAP 000	
Curved Diffuser	2000mm	LT1011	X	DFR 000	
Curved Diffuser End Cap	N/A	LT1012	X	CAP 000	
Mounting Track Fixing Bracket	N/A	LT1013	X	BKT 000	



P 230/24V Constant Voltage Driver Required
X Non electrical component