



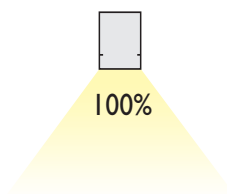
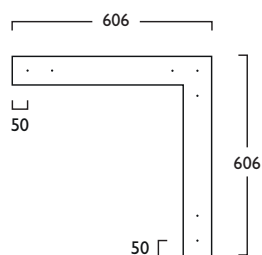
## Infinitas® Nano Xcel Corner 90° Direct

Infinitas® Nano Xcel by Hacer is a refined LED system. Designed and manufactured in the UK, Infinitas® Nano Xcel is sophisticated and minimal in its design. Precision extruded luminaires are available in Suspended, Surface or Recessed formats.

As part of the Infinitas® range, creating continuous lines of uninterrupted uniform lighting, the flexibility of Infinitas® Nano Xcel is further enhanced by Direct and Indirect lighting variations and complete illuminated 90° corners are available, offering diversity in architectural lighting design.

Stylish Solo Modules are also available to compliment the continuous system. Solo Modules are supplied complete with End Caps.

- Available in High, Medium or Low Output Modules
- Clip in gear trays for ease of installation - 70% quicker than screw in trays
- Plug and Socket connections for quick assembly on link systems
- Offering a choice of lumen outputs, delivering up to 4002 lumens
- Life expectancy in excess of 72,000 hours (L80 B10)
- Efficacies up to 132 lm/W
- Corporate colours made to special order
- Suspended luminaires are supplied complete with 2m Wire Suspensions (variable positioning)
- Colour Stability within 3 MacAdams
- Wireless Lighting Control available, see Connected video for full overview



230V  
50Hz

**IP**  
20

3.65 kg

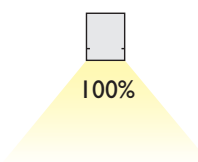
460mm  
Surface & Recessed  
Modules

530mm  
Suspended  
Modules



		High	Medium	Low	
<b>3</b>	<b>Warm White LED (3000K)</b>	<b>CRI 80</b>	<b>21W</b>	<b>15W</b>	<b>9W</b>
	Lumen Output	3825 lm	2804 lm	1768 lm	
	LOR	0.76	0.76	0.76	
	CRI	80	80	80	
	Total Power	23.9W	16.8W	10.6W	
	Power Factor	0.95	0.95	0.95	
	Running Current	0.09A	0.07A	0.04A	
	Inrush Current (Std)	25.0A (250us)	21.0A (126us)	8.0A (100us)	
	Inrush Current (Dim)	13.6A (304us)	13.6A (304us)	13.6A (304us)	
	Efficacy	121 lm/W	126 lm/W	126 lm/W	
	Emergency Output (BLF)	N/A	N/A	N/A	
<b>4</b>	<b>Neutral White LED (4000K)</b>	<b>CRI 80</b>	<b>21W</b>	<b>15W</b>	<b>9W</b>
	Lumen Output	4002 lm	2934 lm	1850 lm	
	LOR	0.76	0.76	0.76	
	CRI	80	80	80	
	Total Power	23.9W	16.8W	10.6W	
	Power Factor	0.95	0.95	0.95	
	Running Current	0.09A	0.07A	0.04A	
	Inrush Current (Std)	25.0A (250us)	21.0A (126us)	8.0A (100us)	
	Inrush Current (Dim)	13.6A (304us)	13.6A (304us)	13.6A (304us)	
	Efficacy	127 lm/W	132 lm/W	132 lm/W	
	Emergency Output (BLF)	N/A	N/A	N/A	

To ensure illumination uniformity High, Medium or Low Output Modules should **not** be mixed. Modules should **always** be matched within their output group.



## Infinitas® Nano Xcel Corner 90° Direct

### High Output

LED	☀	📏	🏠	📐	Ⓚ	🔌	+	⚠
21W LED	606mm	1315	LED	21				647

### Medium Output

LED								
15W LED	606mm	1315	LED	15				647

### Low Output

LED								
9W LED	606mm	1315	LED	09				647

- IU** Link Suspended   **IW** Link Surface   **IY** Link Recessed Bezel
- IJ** Solo Suspended   **IL** Solo Surface   **IQ** Solo Recessed Bezel

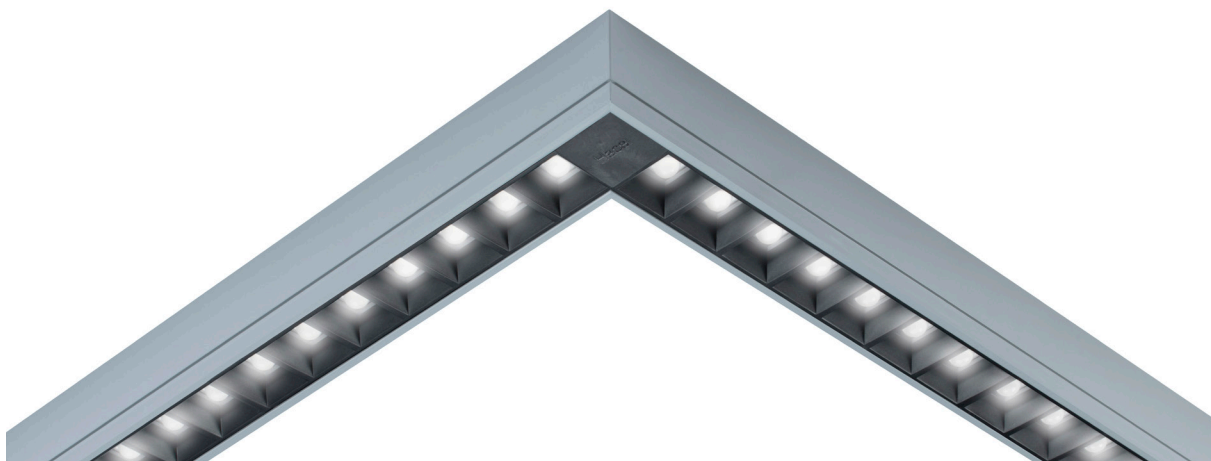
- A** Integral Driver/Remote
- E** Emergency
- J** Switch Dim
- K** Switch Dim + Emergency
- S** DALI Dim
- T** DALI Dim + Emergency
- C** DALI Dim + DALI Emergency
- L** DALI Bluetooth
- M** DALI Bluetooth + Emergency

- 3** Warm (3000K)   **4** Neutral (4000K)
- 1** White (RAL 9010)   **2** Urban Graphite (RAL 7046)   **3** Black (RAL 9005)

#### Options

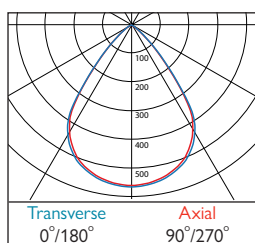
- 344** 3x 5m Suspensions (wires only)

Tel: (0191) 280 9911   Email: [technical@hacel.co.uk](mailto:technical@hacel.co.uk)   Web: [www.hacel.co.uk](http://www.hacel.co.uk)






## Infinitas® Nano Xcel Corner 90° Direct

### Photometrics



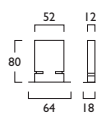
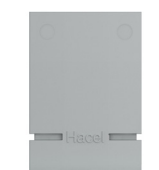
LOR: 0.77

## Infinitas® Nano Xcel End Caps Direct

					
2x End Caps	Surface/Suspended	IN1331	X	CA000	—
2x End Caps	Recessed Bezel	IN1332	X	CA000	—



Surface/Suspended



Recessed Bezel