

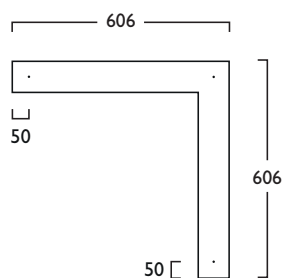
Infinitas® Nano Xcel Corner 90° Direct Indirect

Infinitas® Nano Xcel by Hacer is a refined LED system. Designed and manufactured in the UK, Infinitas® Nano Xcel is sophisticated and minimal in its design. Precision extruded luminaires are available in Surface, Suspended or Recessed Bezel formats.

As part of the Infinitas® range, creating continuous lines of uninterrupted uniform lighting, the flexibility of Infinitas® Nano Xcel is further enhanced by Direct and Indirect lighting variations and complete illuminated 90° corners are available, offering diversity in architectural lighting design.

Stylish Solo Modules are also available to compliment the continuous system. Solo Modules are supplied complete with End Caps.

- Available in High, Medium or Low Output Modules
- Clip in gear trays for ease of installation - 70% quicker than screw in trays
- Plug and Socket Connections for quick assembly on link systems
- Offering a choice of lumen outputs, delivering up to 4739 lumens
- Life expectancy in excess of 75,000 hours (L80 B10)/ 50,000 hours, Zhaga Book 7 LED
- Efficacies up to 109 lm/W
- Corporate colours made to special order
- Suspended luminaires are supplied complete with 2m Wire Suspensions (variable positioning)
- Colour Stability within 3 MacAdams
- Wireless Lighting Control available, see Connected video for full overview

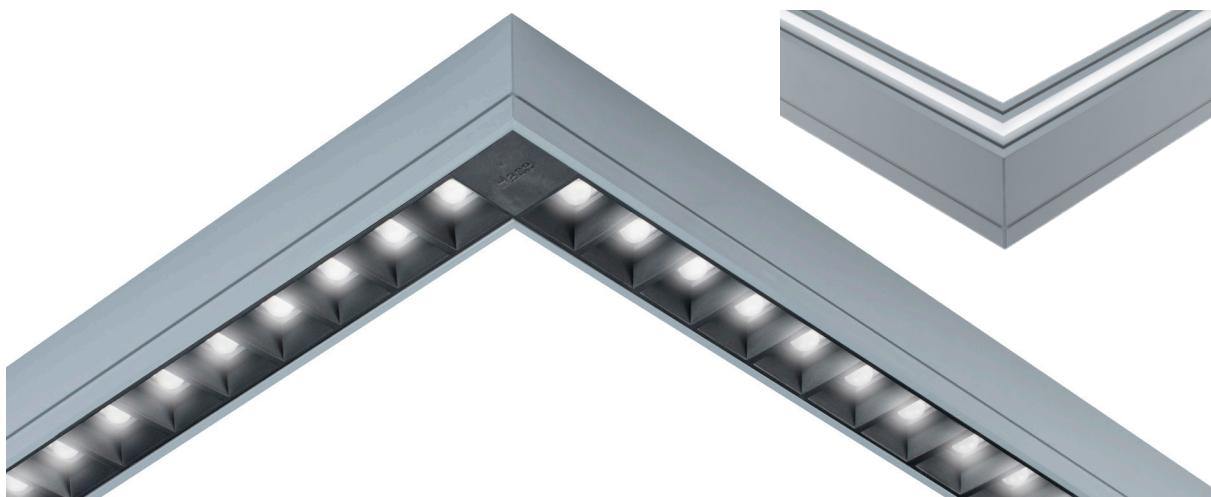


230V
50Hz

IP
20

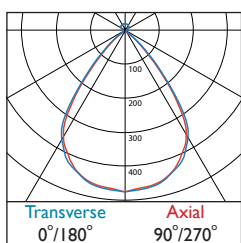
4.05 kg

530mm



Infinitas® Nano Xcel Corner 90° Direct Indirect

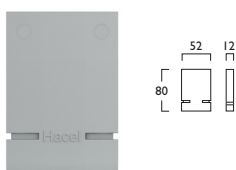
Photometrics



LOR: 0.77

Infinitas® Nano Xcel End Caps Direct Indirect

2x End Caps Suspended IN1331 X CAP000 -



Suspended