

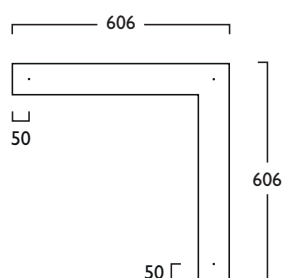
Infinitas® Nano Corners 90° Direct Indirect

Infinitas® Nano by Hacer is a refined LED system. Designed and manufactured in the UK, Infinitas® Nano is sophisticated and minimal in its design. Precision extruded luminaires are available in Suspended, Surface, or Recessed formats.

As part of the Infinitas® range, creating continuous lines of uninterrupted uniform lighting, the flexibility of Infinitas® Nano is further enhanced by Direct and Indirect lighting variations and complete illuminated 90° corners are available, offering diversity in architectural lighting design.

Stylish Solo Modules are also available to compliment the continuous system. Solo Modules are supplied complete with End Caps.

- Available in High, Medium or Low Output Modules
- Low Output Modules with Microprism Refractor and Film achieve UGR <19
- Clip in gear trays for ease of installation - 70% quicker than screw in trays
- Plug and Socket Connections for quick assembly on Link systems
- Offering a choice of lumen outputs, delivering up to 4863 lumens
- Life expectancy in excess of 72,000 hours (L80 B10), Zhaga Book 7 LED
- Efficacies up to 105 lm/W
- Corporate colours made to special order
- Suspended luminaires are supplied complete with 2m Wire Suspensions (variable positioning)
- All Modules are available with MicroPrism Refractors or Opal Diffusers, see option codes
- Colour Stability within 3 MacAdams
- Wireless Lighting Control available, see Connected video for full overview

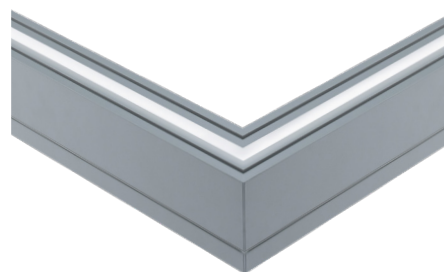
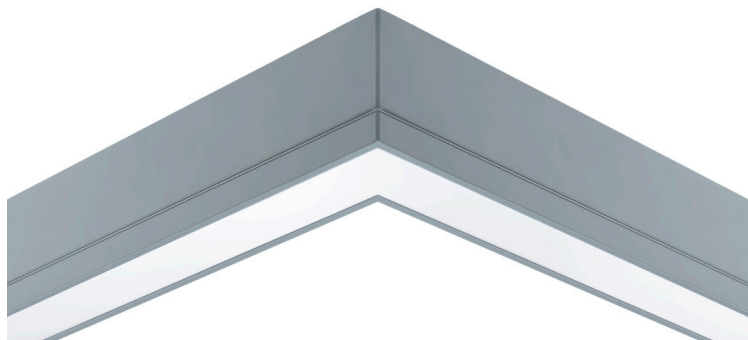


230V
50Hz

IP
20

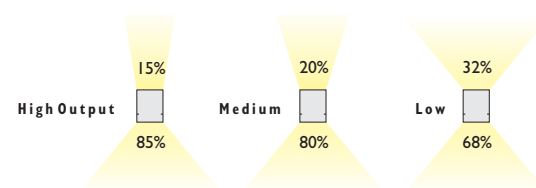
 3.15 kg

 530mm



		High	Medium	Low
3	Warm White LED (3000K)	CRI 80 28W	21W	15W
	Lumen Output	4609 lm	3503 lm	2355 lm
	LOR	0.68	0.68	0.68
	CRI	80	80	80
	Total Power	31.4W	24.0W	16.6W
	Power Factor	0.95 / 0.92	0.95 / 0.97	0.95 / 0.92
	Running Current	0.12A	0.10A	0.07A
	Inrush Current (Std)	44.0A (320us)	44.0A (320us)	44.0A (320us)
	Inrush Current (Dim)	46.6A (320us)	36.6A (320us)	36.6A (320us)
	Efficacy	99 lm/W	99 lm/W	96 lm/W
	Emergency Output (BLF)	N/A	N/A	N/A
4	Neutral White LED (4000K)	CRI 80 28W	21W	15W
	Lumen Output	4863 lm	3688 lm	2468 lm
	LOR	0.68	0.68	0.68
	CRI	80	80	80
	Total Power	31.4W	24.0W	16.6W
	Power Factor	0.95 / 0.92	0.95 / 0.97	0.95 / 0.92
	Running Current	0.12A	0.10A	0.07A
	Inrush Current (Std)	44.0A (320us)	44.0A (320us)	44.0A (320us)
	Inrush Current (Dim)	46.6A (320us)	36.6A (320us)	36.6A (320us)
	Efficacy	105 lm/W	104 lm/W	101 lm/W
	Emergency Output (BLF)	N/A	N/A	N/A

To ensure illumination uniformity High, Medium or Low Output Modules should not be mixed. Modules should always be matched within their output group.



*% of Direct illumination

Infinitas® Nano Corners 90° Direct Indirect

High Output

LED	☀️	📏	🏠	📐	📏	📏	📏	📏	📏	📏	Opal	Microprism
28W LED	606mm	1328	LED	28							687	702

Medium Output

LED	☀️	📏	🏠	📐	📏	📏	📏	📏	📏	📏	Opal	Microprism
21W LED	606mm	1328	LED	21							682	697

Low Output

LED	☀️	📏	🏠	📐	📏	📏	📏	📏	📏	📏	Opal	Microprism
15W LED	606mm	1328	LED	15							677	692

IV Link Suspended (Direct/Indirect)

IK Solo Suspended (Direct/Indirect)

A Integral Driver/Remote

J Switch Dim

S DALI Dim

L DALI Bluetooth

3 Warm (3000K) **4** Neutral (4000K)

I White (RAL 9010) **2** Urban Graphite (RAL 7046) **3** Black (RAL 9005)

Options

344 3x 5m Suspensions (wires only)

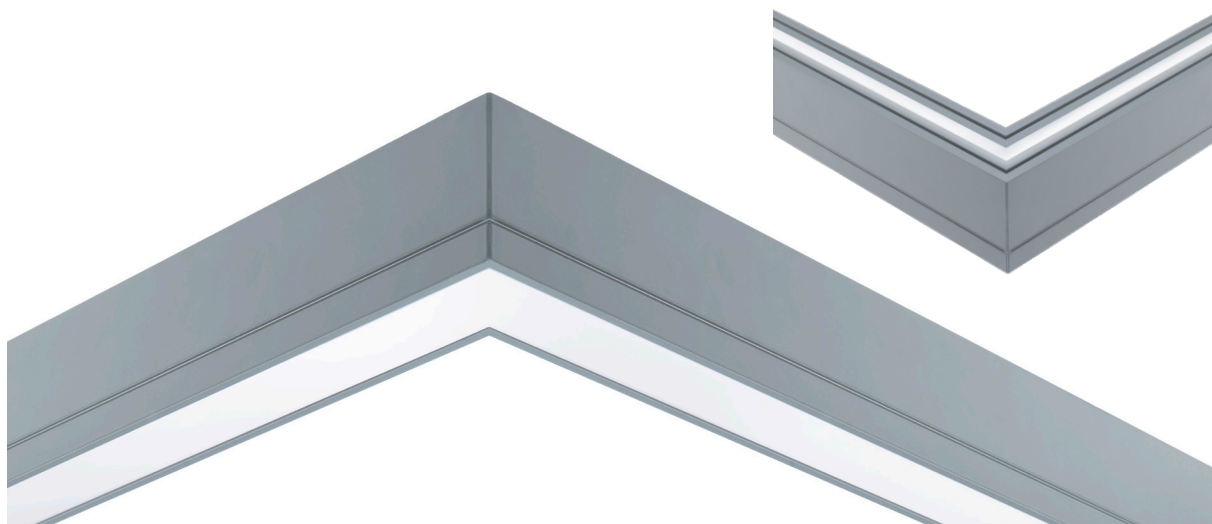
Opal Option

704 Corner Opal Diffuser

Microprism Option

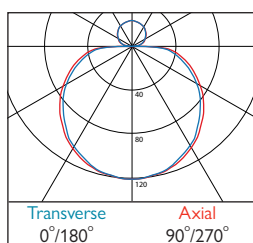
709 Corner Microprism Refractor and Film

Only Low Output Modules with Microprism Refractor and Film achieve UGR<19.



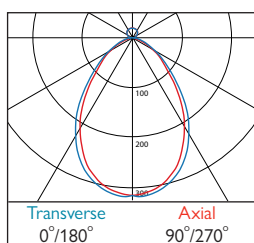
Infinitas® Nano Corners 90° Direct Indirect

Photometrics



677/682/687 LOR: 0.67

Opal



692/697/702 LOR: 0.63

Microprism

Infinitas® Nano End Caps Direct Indirect

2x End Caps Suspended IN1331 X CAP000 -



Suspended