



3	Warm White LED (3000K)	CRI 80				CRI 90			
		12W	17W	22W	28W	12W	17W	22W	28W
	Lumen Output	2041 lm	2885 lm	4099 lm	5206 lm	1650 lm	2330 lm	3297 lm	4206 lm
	LOR	0.81	0.81	0.81	0.81	0.81	0.81	0.81	0.81
	CRI	80	80	80	80	90	90	90	90
	Total Power	11.9W	16.6W	23.5W	30.9W	11.9W	16.6W	23.5W	30.9W
	Power Factor	0.95	0.96	0.96	0.95	0.95	0.96	0.96	0.95
	Running Current	0.05A	0.08A	0.11A	0.14A	0.05A	0.08A	0.11A	0.14A
	Inrush Current (Std)	8A (28us)	25.9A (252us)	50A (209us)	80.6A (210us)	8A (28us)	25.9A (252us)	50A (209us)	80.6A (210us)
	Inrush Current (Dim)	10A (50us)	26A (264us)	50.6A (210us)	78A (209us)	10A (50us)	26A (264us)	50.6A (210us)	78A (209us)
	Efficacy	138 lm/W	140 lm/W	141 lm/W	136 lm/W	112 lm/W	113 lm/W	113 lm/W	110 lm/W
	Emergency Output (BLF)	N/A	N/A	N/A	N/A	N/A	N/A	N/A	N/A

4	Neutral White LED (4000K)	CRI 80				CRI 90			
		12W	17W	22W	28W	12W	17W	22W	28W
	Lumen Output	2143 lm	3023 lm	4294 lm	5445 lm	1796 lm	2533 lm	3620 lm	4592 lm
	LOR	0.81	0.81	0.81	0.81	0.81	0.81	0.81	0.81
	CRI	80	80	80	80	90	90	90	90
	Total Power	11.9W	16.6W	23.5W	30.9W	11.9W	16.6W	23.5W	30.9W
	Power Factor	0.95	0.96	0.96	0.95	0.95	0.96	0.96	0.95
	Running Current	0.05A	0.08A	0.11A	0.14A	0.05A	0.08A	0.11A	0.14A
	Inrush Current (Std)	8A (28us)	25.9A (252us)	50A (209us)	80.6A (210us)	8A (28us)	25.9A (252us)	50A (209us)	80.6A (210us)
	Inrush Current (Dim)	10A (50us)	26A (264us)	50.6A (210us)	78A (209us)	10A (50us)	26A (264us)	50.6A (210us)	78A (209us)
	Efficacy	145 lm/W	147 lm/W	148 lm/W	142 lm/W	122 lm/W	123 lm/W	124 lm/W	120 lm/W
	Emergency Output (BLF)	N/A	N/A	N/A	N/A	N/A	N/A	N/A	N/A

Table applies to one LED Light Engine

Aleda® Ported Trio



LED CRI 80

3x 12W	LED	Trio	CK398	LED	12	+	377
3x 17W	LED	Trio	CK398	LED	17	+	377
3x 22W	LED	Trio	CK398	LED	22	+	377
3x 28W	LED	Trio	CK398	LED	28	+	377

LED CRI 90

3x 12W	LED	Trio	CK399	LED	12	+	378
3x 17W	LED	Trio	CK399	LED	17	+	378
3x 22W	LED	Trio	CK399	LED	22	+	378
3x 28W	LED	Trio	CK399	LED	28	+	378

- LED multi head styling neatly integrated into semi recessed design
- Single point Zhaga Book 3 LED
- Choice of lumen outputs, delivering up to 5445 lumens per Aleda® head
- Efficacies up to 148 lm/W
- Life expectancy in excess of 57,000 hours (L90 B10)
- CRI 80 and CRI 90 versions available, colour stability within 3 MacAdams
- White, Black, Urban Graphite Bezel colour options.
- Inner recess and Aleda® luminaire(s) finished in Black (colour options available on request)
- Wireless Lighting Control available, see Connected video for full overview
- Digital Dim options available on request

- A** Integral Driver/Remote
- J** Switch Dim
- S** DALI Dim
- L** DALI Bluetooth

3 Warm (3000K) **4** Neutral (4000K)

1 White (RAL 9010) **2** Urban Graphite (RAL 7046) **3** Black (RAL 9005)

Reflector	CRI 80	CRI 90
482 3x Narrow Beam	379	380
483 3x Wide Beam	381	382

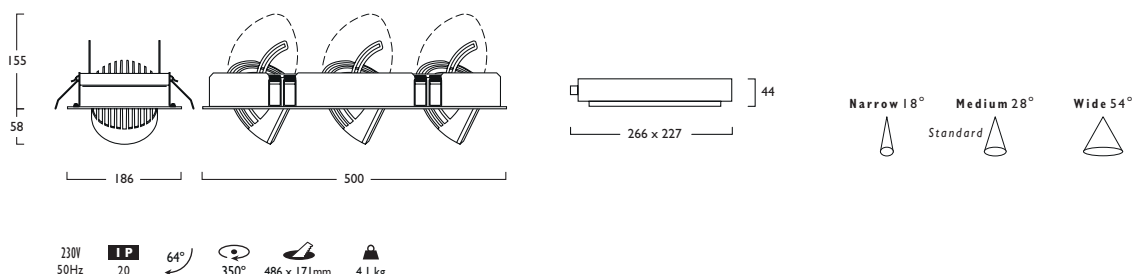
Luminescent Halo, Baffle - Examples Shown on page 2

Tel: (0191) 280 9911 Email: technical@hacel.co.uk Web: www.hacel.co.uk V3 - 06/2024

* All values provided in this document are subject to International standards and electronic components from leading suppliers which are subject to +/- 10% tolerance and apply at an ambient temperature of 25°C. Hacer Lighting look to constantly improve it's product and reserve the right to change specifications without prior notification.

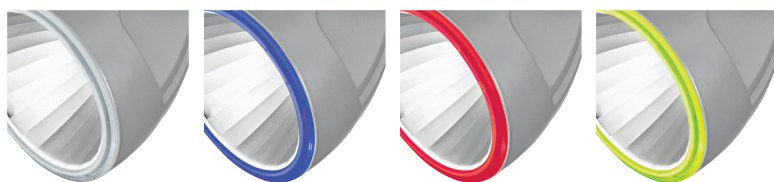


Aleda® Ported Trio



Options

■ Luminescent Halo Options



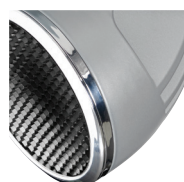
491 3x Etched Ice

492 3x Neptune Blue

493 3x Mars Red

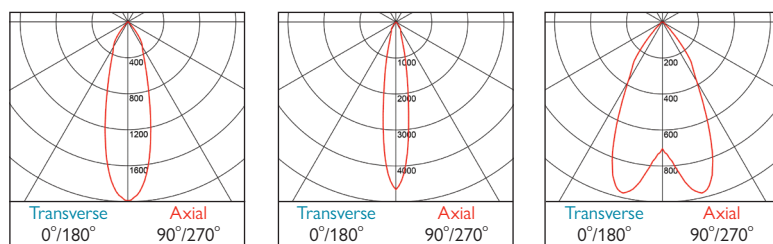
494 3x Acid Green

■ Baffle Option



495 3x Anti Glare Baffle

Photometrics



377-378 DLOR: 0.81

379-380 DLOR: 0.83

381-382 DLOR: 0.86