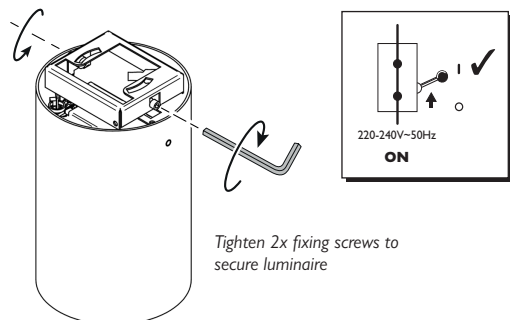


Installation Cont.

9



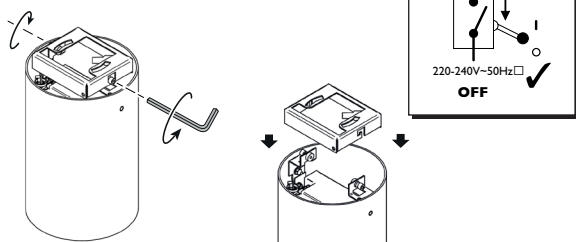
Tighten 2x fixing screws to secure luminaire

Reconnect electricity supply and test the installation

Emergency Battery Replacement

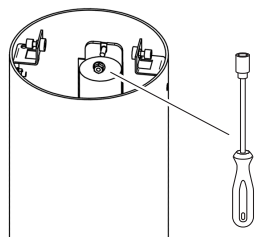
1

Disconnect electricity supply



Unscrew 2x fixing screws (Do not fully remove), until luminaire can slide off and unhook.

2

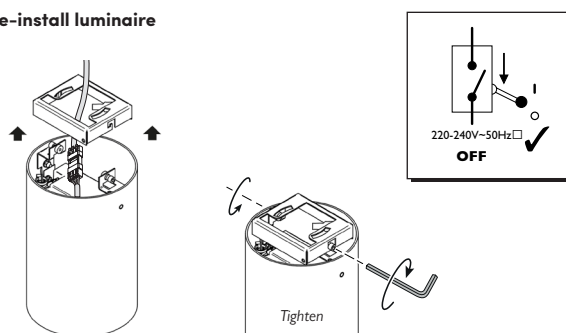


Unscrew and retain battery locking nuts.
Disconnect battery and replace

Emergency Battery Replacement Cont.

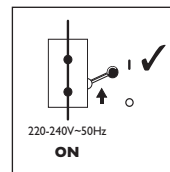
3

Re-install luminaire



Follow points 1 & 2 in reverse to re-install

Reconnect electricity supply and test the installation



IMPORTANT INFORMATION

Microbezel® 155/215/300 Surface



IMPORTANT INFORMATION

Disconnect electricity supply before installation

To be installed by qualified personnel only and in accordance with current building and wiring regulations.

When installing, we recommend wearing disposable gloves to avoid fingerprinting to the paint work of the luminaire.

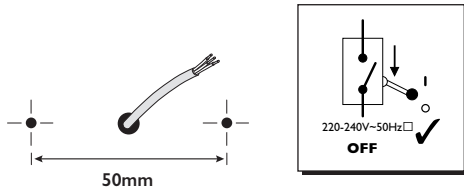
Read leaflet fully before installation.

Hacel[®]
Fluent in Lighting

THE SILVERLINK, WALLSEND, NEWCASTLE UPON TYNE,
TYNE & WEAR, NE28 9ND

Technical: **(0191) 280 9914**
Email: technical@hacel.co.uk
Web: www.hacel.co.uk

Preparation



Ensure fixings used are suitable for mounting substrate.

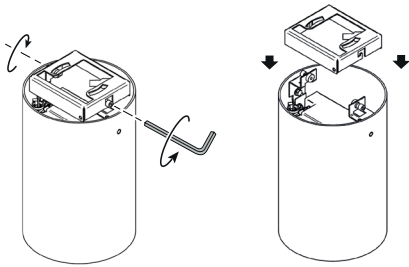
Microbezel 155 - SD1619/SD1617 = 0.8 kg / 1.0 kg

Microbezel 215 - SD1611 = 0.9 kg

Microbezel 300 - SD1607 = 1.0 kg

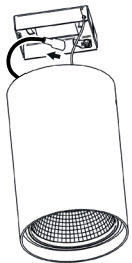
Installation

1



Unscrew 2x fixing screws (Do not fully remove), until luminaire can slide off and unhook.

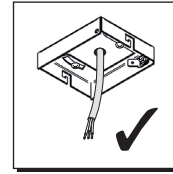
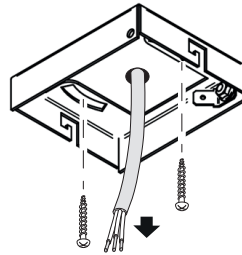
2



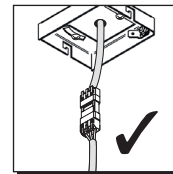
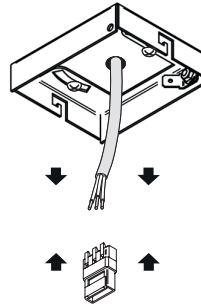
Disconnect Earth Cable from the Earth Tab

Installation Cont.

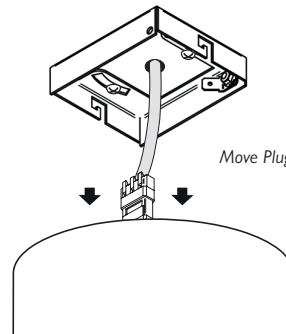
3



4



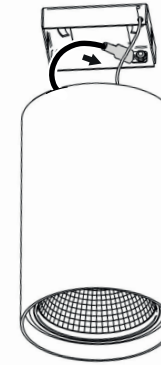
5



Move Plugs into the luminaire body

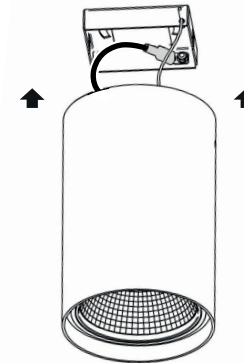
Installation Cont.

6



Re-connect the Earth Cable to the Earth Tab.

7



8

